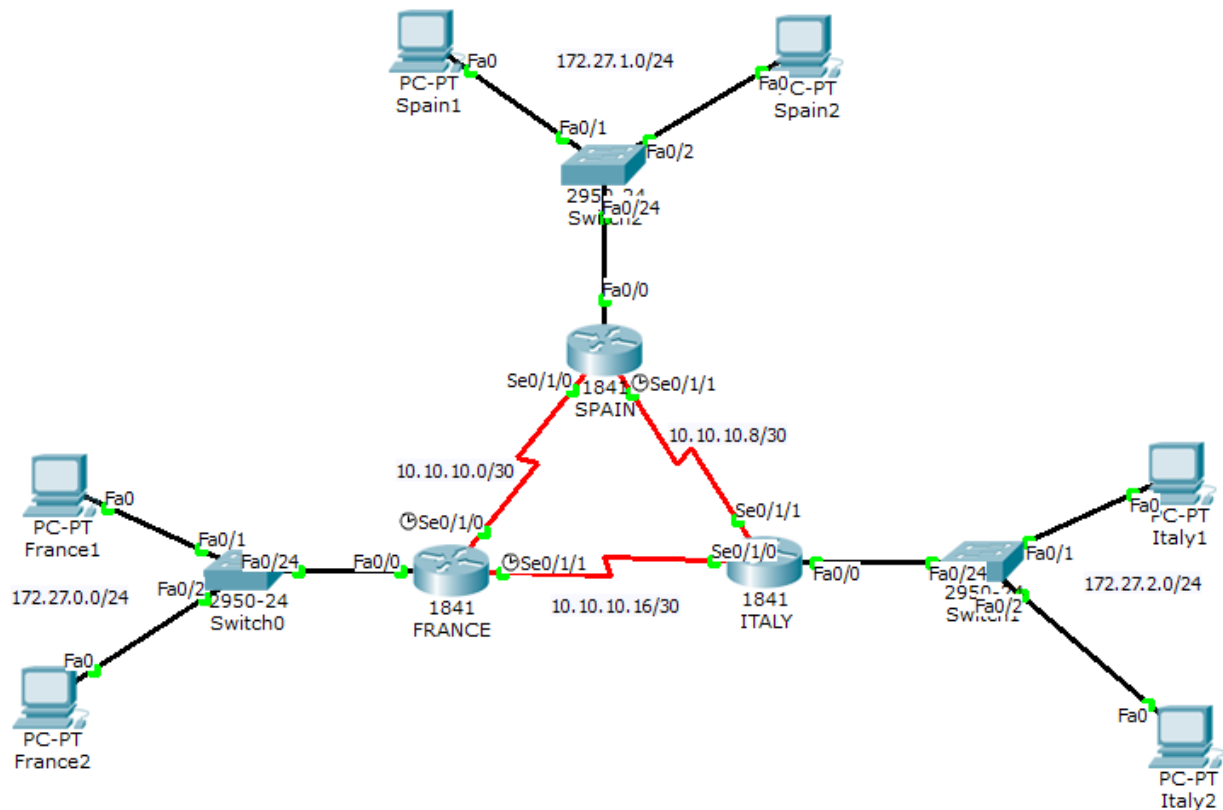


# EJEMPLO DE ENRUTAMIENTO DINÁMICO PROTOCOLO RIP



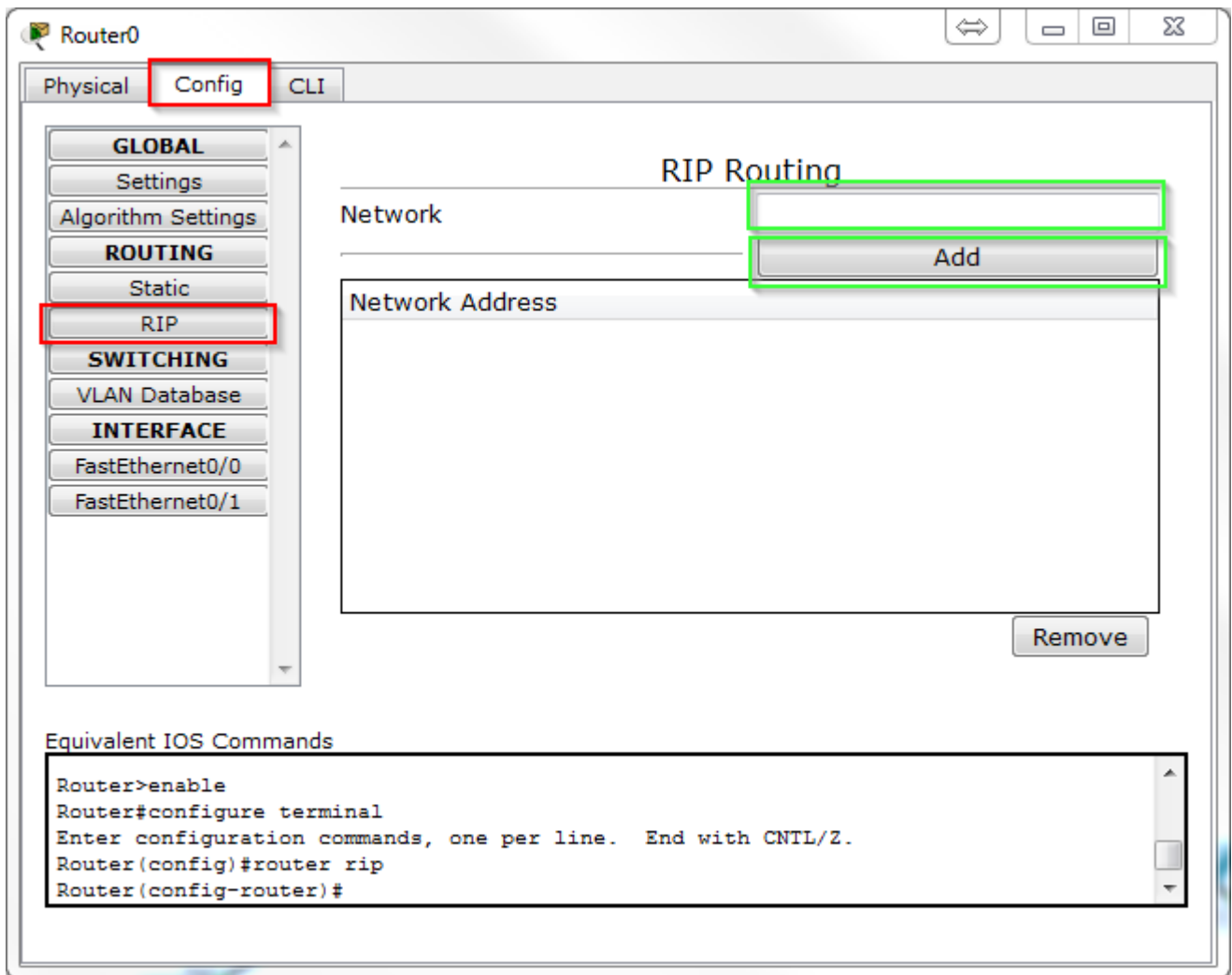
ZONA	EQUIPO	IPS	MÁSCARA DE RED	GATEWAY	
FRANCE	France1	172.27.0.100	255.255.255.0	172.27.0.1	
	France2	172.27.0.101	255.255.255.0	172.27.0.1	
	Switch0	-----	-----	-----	
	France Router		172.27.0.1	255.255.255.0	-----
			10.10.10.1	255.255.255.252	-----
			10.10.10.17	255.255.255.252	-----
SPAIN	Spain1	172.27.1.100	255.255.255.0	172.27.1.1	
	Spain2	172.27.1.101	255.255.255.0	172.27.1.1	
	Switch2	-----	-----	-----	
	Spain Router	172.27.1.1	255.255.255.0	-----	

**CLASES PARTICULARES, TUTORÍAS TÉCNICAS ONLINE**  
**LLAMA O ENVÍA WHATSAPP: 689 45 44 70**

---

**ONLINE PRIVATE LESSONS FOR SCIENCE STUDENTS**  
**CALL OR WHATSAPP:689 45 44 70**

Cartagena99



### ROUTER1:

```

Router> en
Router# config t
Enter configuration commands, one per line. End with CNTL/Z.
Router(config)# router rip
Router(config-router)# network 172.27.0.0
Router(config-router)# network 10.10.10.0
Router(config-router)# network 10.10.10.16
Router(config-router)# version 2
Router(config-router)# no auto-summary
Router(config-router)# exit
  
```

### ROUTER2:

CLASES PARTICULARES, TUTORÍAS TÉCNICAS ONLINE  
 LLAMA O ENVÍA WHATSAPP: 689 45 44 70

---

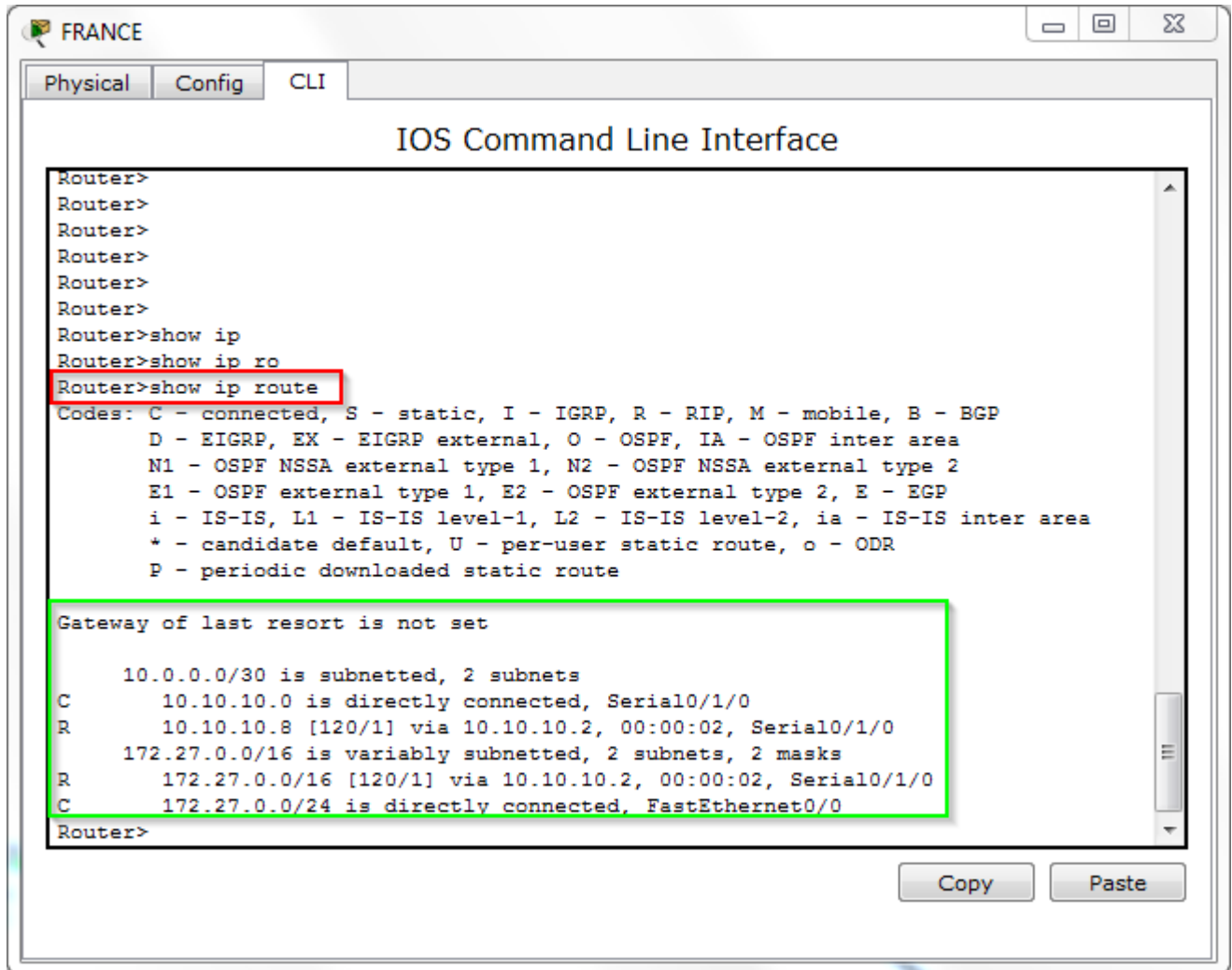
ONLINE PRIVATE LESSONS FOR SCIENCE STUDENTS  
 CALL OR WHATSAPP:689 45 44 70

Cartagena99

Router (config-router) # exit

### ROUTER3:

```
Router> en
Router# config t
Enter configuration commands, one per line. End with CNTL/Z.
Router(config)# router rip
Router(config-router)# network 172.27.2.0
Router(config-router)# network 10.10.10.8
Router(config-router)# network 10.10.10.16
Router(config-router)# version 2
Router(config-router)# no auto-summary
Router(config-router)# exit
```



```
Router>
Router>
Router>
Router>
Router>
Router>
Router>show ip
Router>show ip ro
Router>show ip route
Codes: C - connected, S - static, I - IGRP, R - RIP, M - mobile, B - BGP
       D - EIGRP, EX - EIGRP external, O - OSPF, IA - OSPF inter area
       N1 - OSPF NSSA external type 1, N2 - OSPF NSSA external type 2
       E1 - OSPF external type 1, E2 - OSPF external type 2, E - EGP
       i - IS-IS, L1 - IS-IS level-1, L2 - IS-IS level-2, ia - IS-IS inter area
       * - candidate default, U - per-user static route, o - ODR
       P - periodic downloaded static route

Gateway of last resort is not set

 10.0.0.0/30 is subnetted, 2 subnets
 C    10.10.10.0 is directly connected, Serial10/1/0
 R    10.10.10.8 [120/1] via 10.10.10.2, 00:00:02, Serial10/1/0
 172.27.0.0/16 is variably subnetted, 2 subnets, 2 masks
 R    172.27.0.0/16 [120/1] via 10.10.10.2, 00:00:02, Serial10/1/0
 C    172.27.0.0/24 is directly connected, FastEthernet0/0
Router>
```

Cartagena99

CLASES PARTICULARES, TUTORÍAS TÉCNICAS ONLINE  
LLAMA O ENVÍA WHATSAPP: 689 45 44 70

---

ONLINE PRIVATE LESSONS FOR SCIENCE STUDENTS  
CALL OR WHATSAPP:689 45 44 70